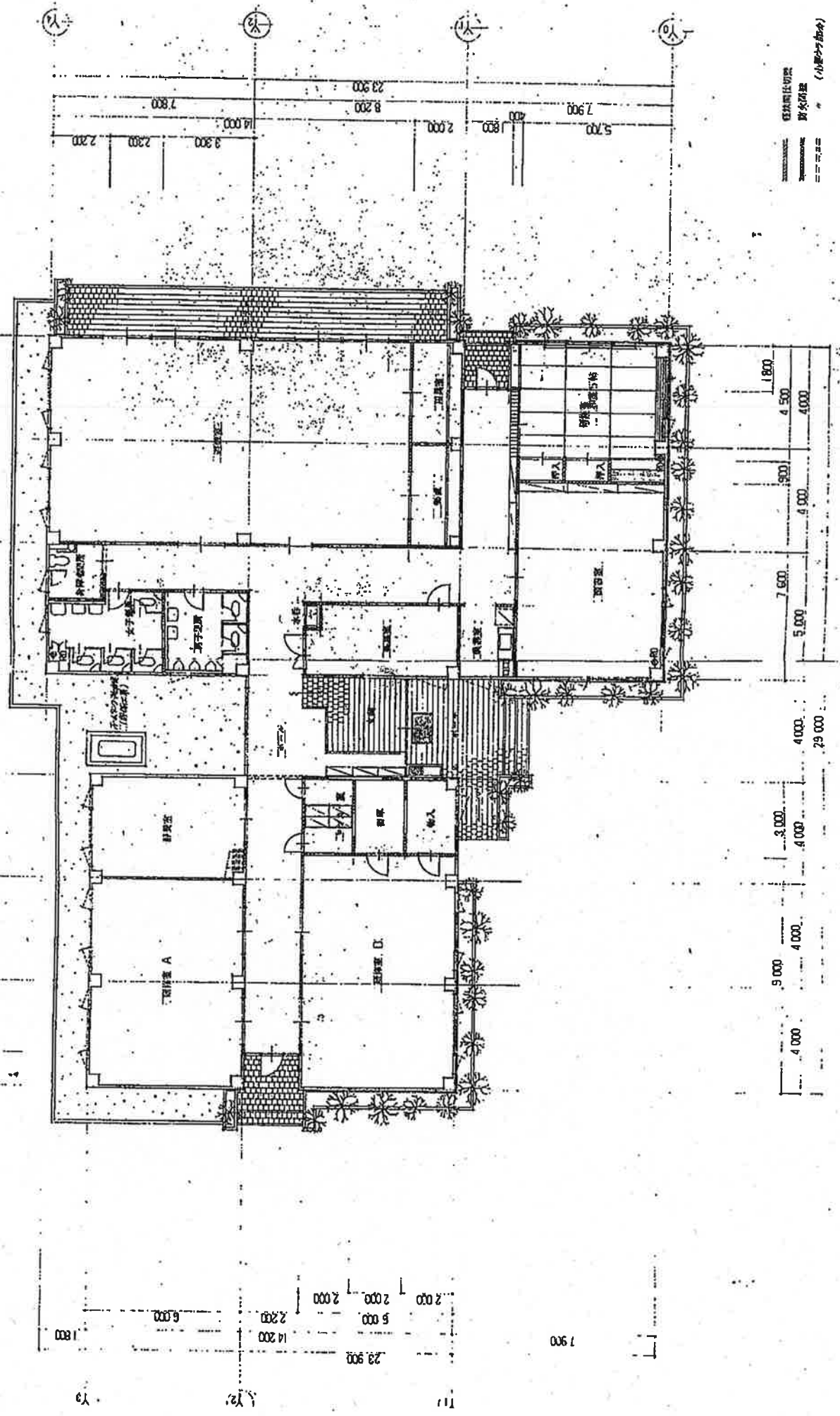


弘前市みやぞの児童センター



建築士切図  
 図面番  
 (小冊子用紙)

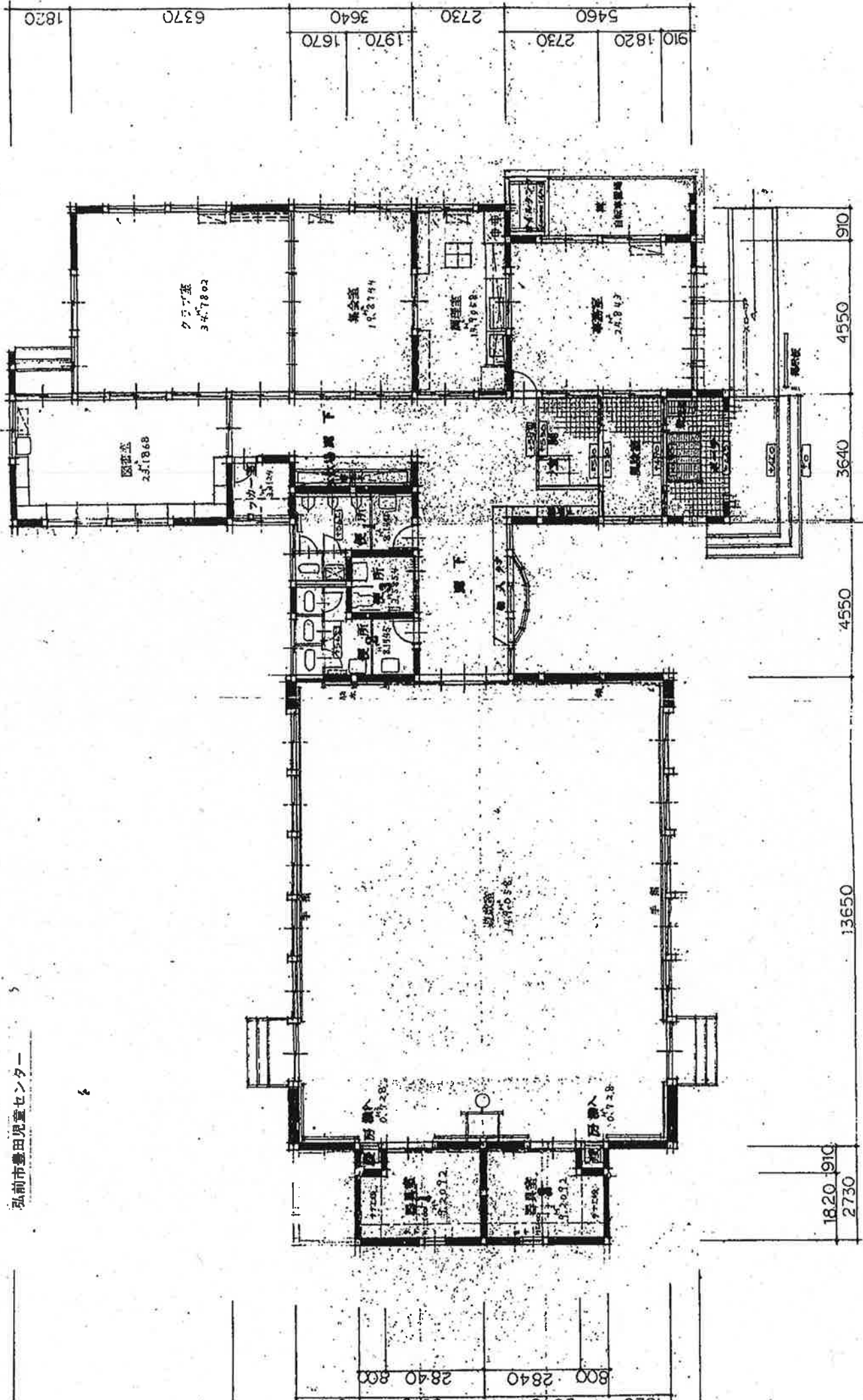
1800	4500	4000	7500	5000	4000	29000
3000	4000	4000	3000	4000	4000	29000

29000	4000	13000	8000	2800	400	1800	4000	12000	8000	13000
29000	4000	13000	8000	2800	400	1800	4000	12000	8000	13000

23900	5000	2000	2000	2000	14200	2200	6000	1800
23900	5000	2000	2000	2000	14200	2200	6000	1800



弘前市豊田児童センター



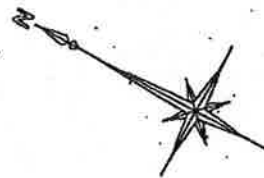
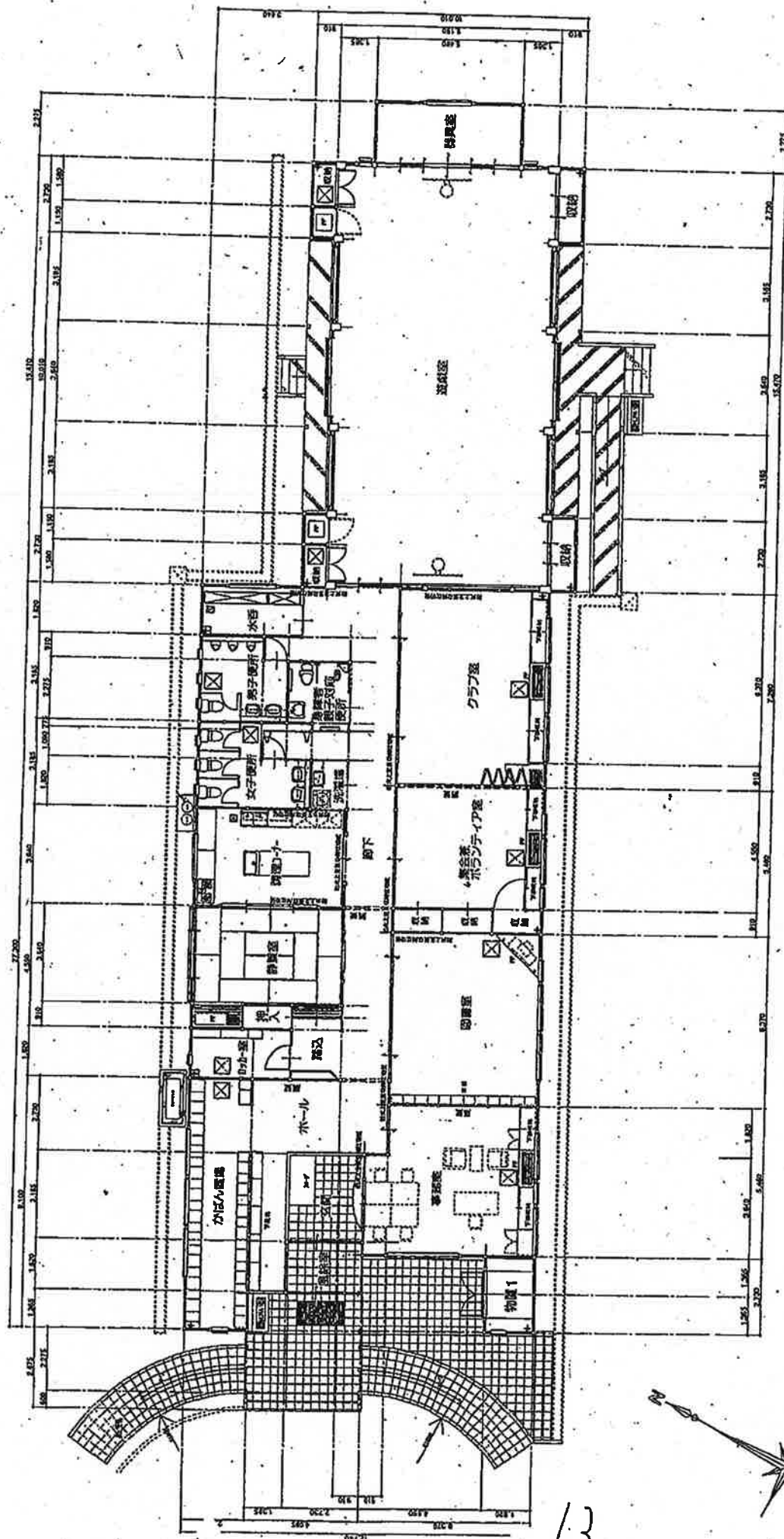


[illegible]

84-7-247

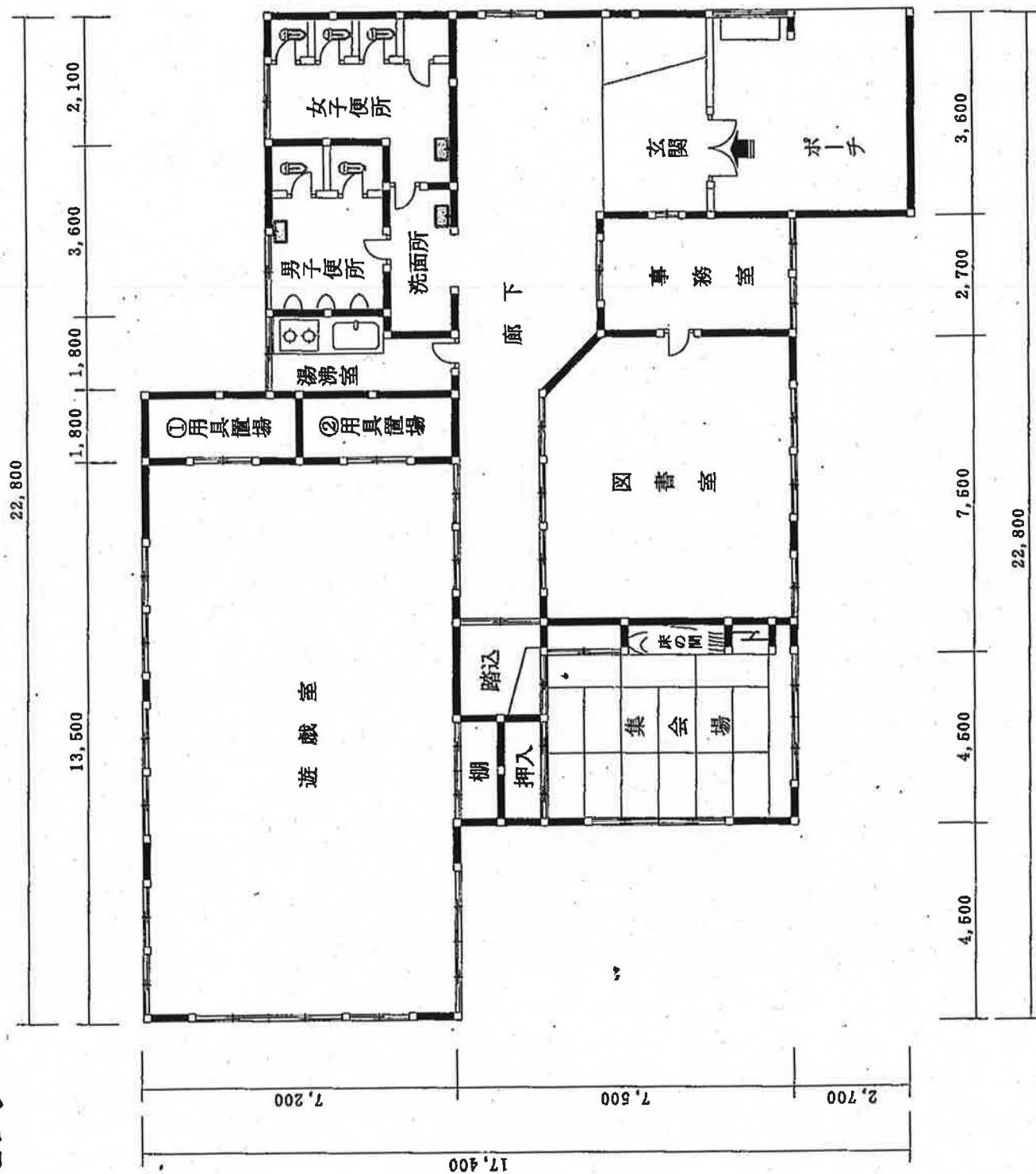


弘前市千年児童センター

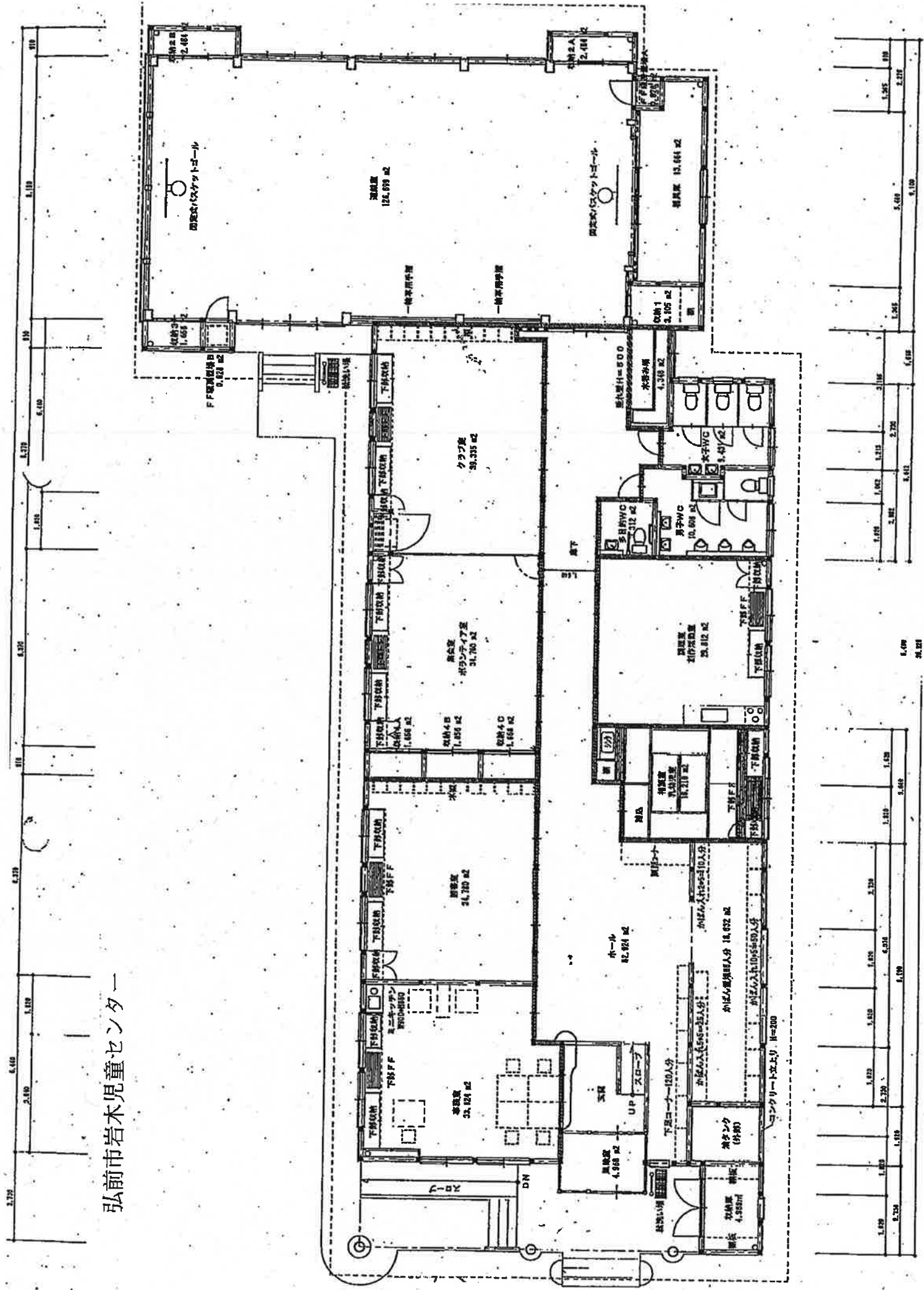


13

# 一 弘前市西部児童センター

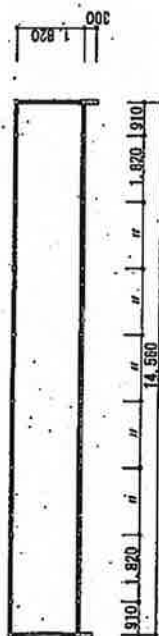


# 弘前市岩木児童センター

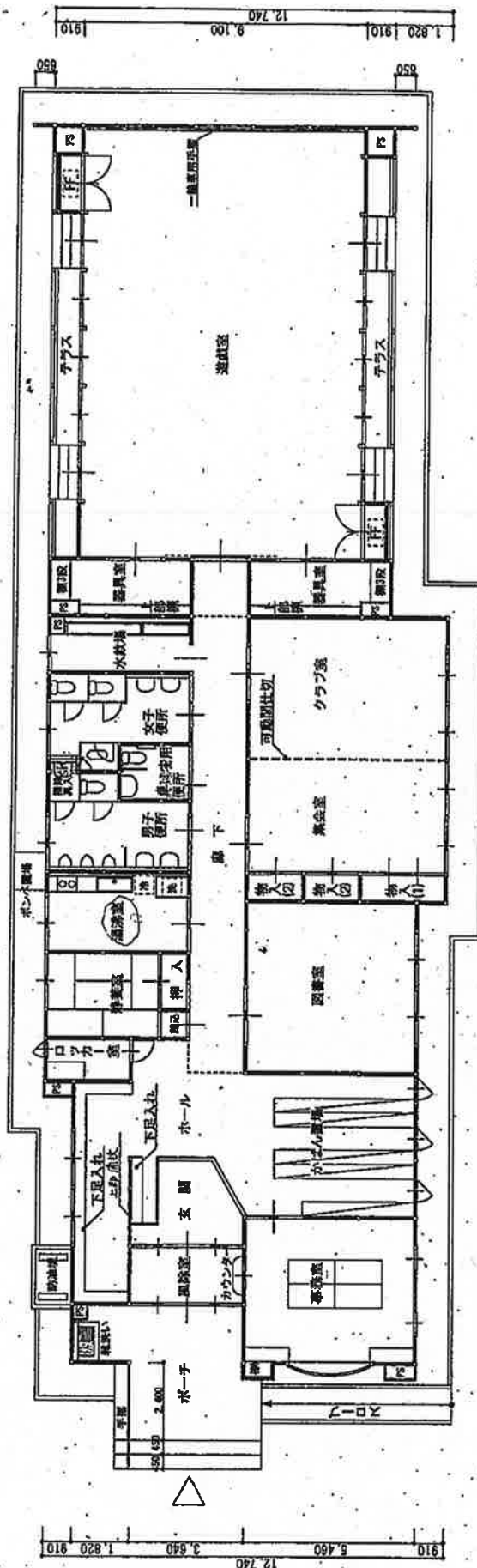
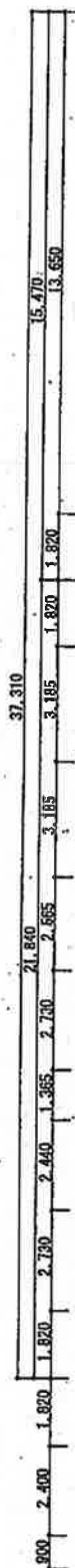




A horizontal number line with a vertical tick mark at the center. To the left of the center, there is another tick mark labeled 'z'.



廊下上部ハイサイドライト



1 階平面図 1/100

延床面積 417.45m<sup>2</sup>